

# MEETING AGENDA

## Prince George County School Board

---

For further information call 733-2700

**TYPE OF MEETING:** Special Work Session

**DATE:** August 19, 2021

**LOCATION:** School Board Office

**TIME:** 7:00 P.M.  
6:00 P.M. (closed meeting)

---

- I. CALL TO ORDER
- II. ROLL CALL
- III. PLEDGE OF ALLEGIANCE
- IV. SCHOOL BOARD INVOCATION
- V. APPROVAL OF AGENDA
- VI. MOTION TO GO INTO A CLOSED MEETING TO DISCUSS A SPECIFIC LEGAL MATTER RELATING TO STATE MANDATES AND EXCEPTIONS, A SPECIFIC PERSONNEL MATTER RELATING TO THE EMPLOYMENT, ASSIGNMENT, APPOINTMENT, PROMOTION, DEMOTION, PERFORMANCE, SALARIES, OR RESIGNATION OF DISTRICT EMPLOYEES, AND SPECIFIC STUDENT MATTER RELATING TO STUDENT POLICY, DISCIPLINE, RESIDENCY, OR TUITION (pursuant to Section 2.2-3711 of the Code of Virginia)
  - A. Legal Matter – Section 2.2-3711.A.7
    1. Legal Matter L01/21-22

- B. Personnel Matter – Section 2.2-3711.A.1
  - 1. Personnel Matter P08/21-22
- C. Student Matter – Section 2.2-3711.A.2
  - 1. Student Matter S06/21-22

**VII. CERTIFICATION OF CLOSED MEETING AND ACTIONS**

**VIII. CONSENT AGENDA**

- A. Personnel Report

**IX. ACTION ITEMS**

- A. Resolution to Approve the Dedication of Easement for the Land on Middle Road – Lisa Pennycuff

**X. ADJOURNMENT**

Date: August 19, 2021  
Presenter: Dr. Lisa Pennycuff

Approved: \_\_\_\_\_  
Disapproved: \_\_\_\_\_  
Tabled: \_\_\_\_\_

---

TOPIC: PERSONNEL.

- A. Appointments - 8
- B. Resignations - 9
- C. Retirement - 1

---

RECOMMENDATION: Approval

Date: August 19, 2021

Presenter: Lisa Pennycuff, Ed.D

Approved: \_\_\_\_\_

Disapproved: \_\_\_\_\_

Tabled: \_\_\_\_\_

---

**TOPIC:**

Resolution to Approve the Dedication of Easement for the Land on Middle Road

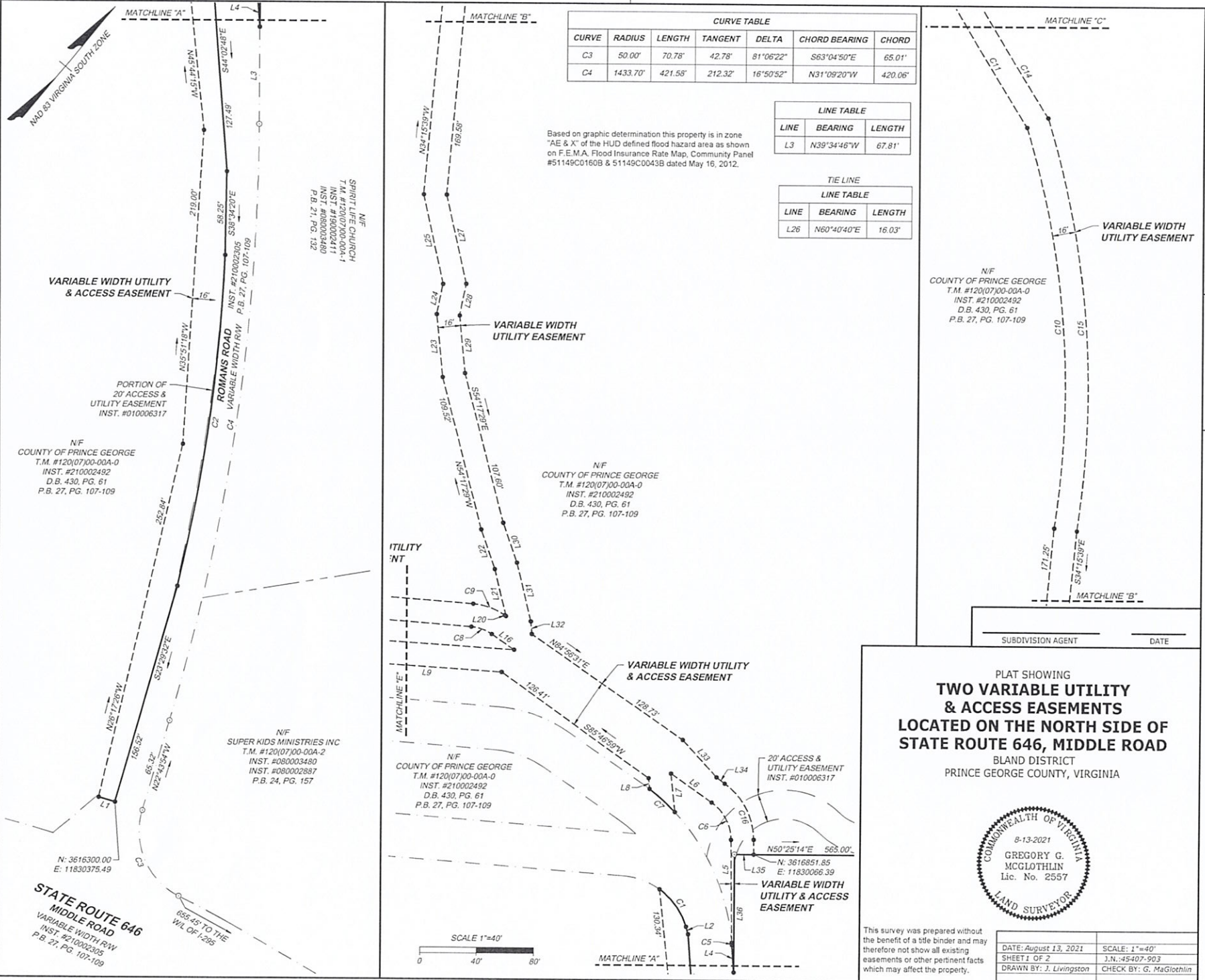
**RATIONALE:**

Per the County's request, this resolution is necessary to ensure that all utility and access easements for the New Prince George Elementary School, now owned by the School Board, are included. These are shown on *School Board Plat Sheet 1* and *School Board Plat Sheet 2* and described in the *Deed of Dedication Easement* for the land on Middle Road.

**RECOMMENDATION:**

Adopt a resolution to approve the Dedication of Easement for the land on Middle Road where the New Prince George Elementary School is being built.



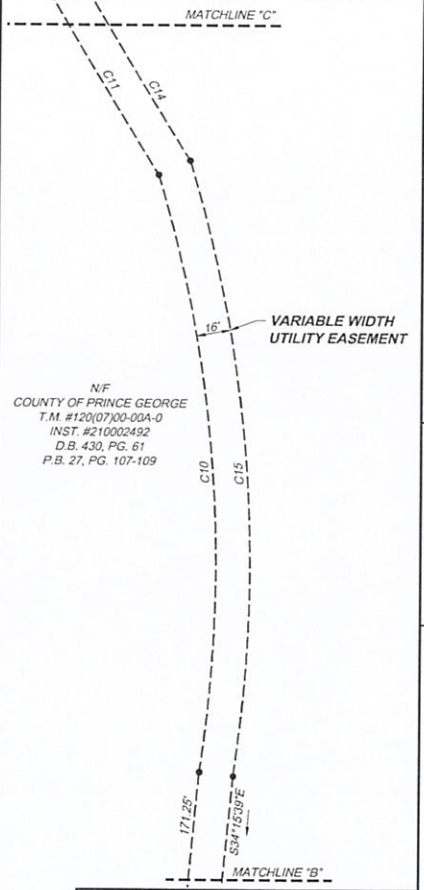


CURVE TABLE						
CURVE	RADIUS	LENGTH	TANGENT	DELTA	CHORD BEARING	CHORD
C3	50.00'	70.78'	42.78'	81°06'22"	S63°04'50"E	65.01'
C4	1433.70'	421.55'	212.32'	16°50'52"	N31°09'20"W	420.06'

LINE TABLE		
LINE	BEARING	LENGTH
L3	N39°34'46"W	67.81'

TIE LINE		
LINE TABLE		
LINE	BEARING	LENGTH
L26	N60°40'40"E	16.03'

Based on graphic determination this property is in zone "AE & X" of the HUD defined flood hazard area as shown on F.E.M.A. Flood Insurance Rate Map, Community Panel #51149C0160B & 51149C0043B dated May 16, 2012.



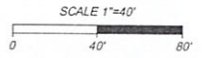
SUBDIVISION AGENT \_\_\_\_\_ DATE \_\_\_\_\_

PLAT SHOWING  
**TWO VARIABLE UTILITY & ACCESS EASEMENTS**  
 LOCATED ON THE NORTH SIDE OF  
**STATE ROUTE 646, MIDDLE ROAD**  
 BLAND DISTRICT  
 PRINCE GEORGE COUNTY, VIRGINIA



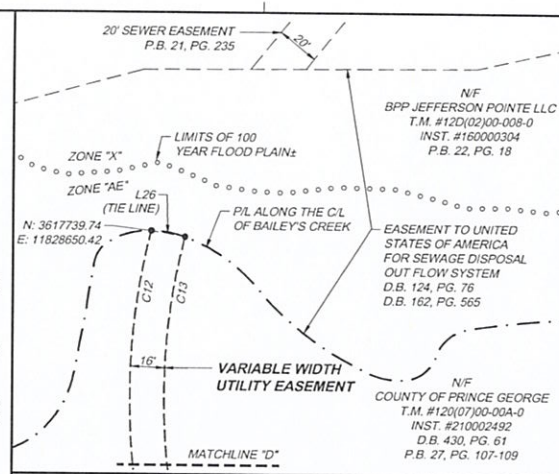
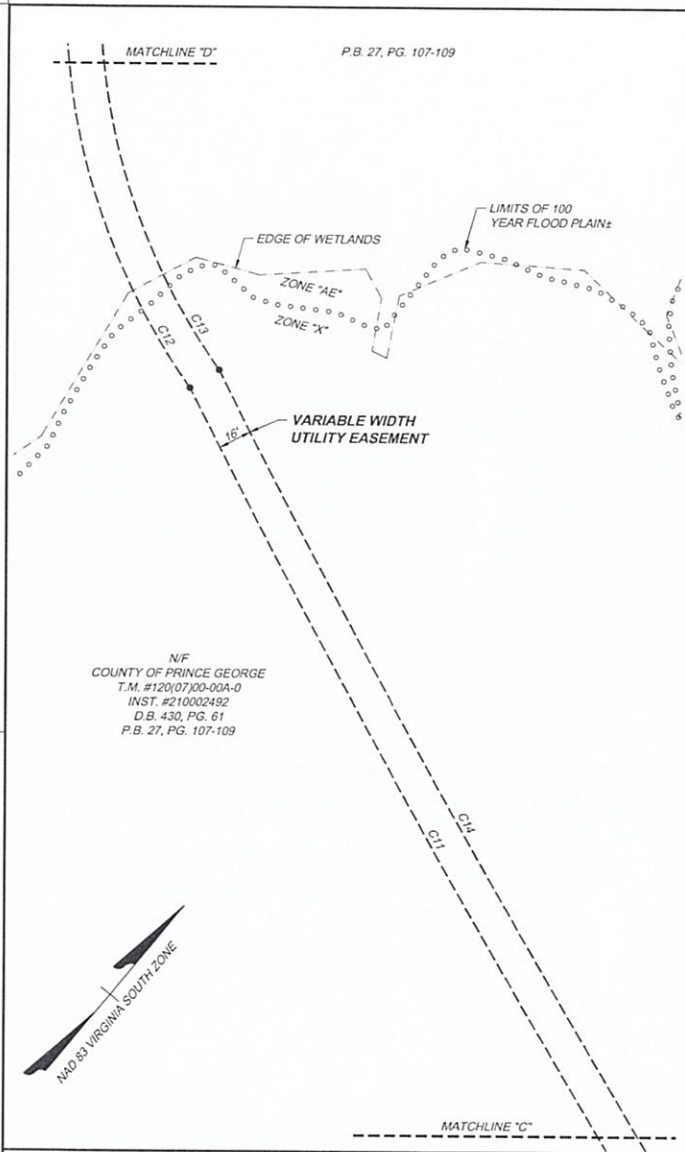
This survey was prepared without the benefit of a title binder and may therefore not show all existing easements or other pertinent facts which may affect the property.

DATE: August 13, 2021	SCALE: 1"=40'
SHEET 1 OF 2	I.N.: 45-407-903
DRAWN BY: J. Livingston	CHECK BY: G. MaGlothlin



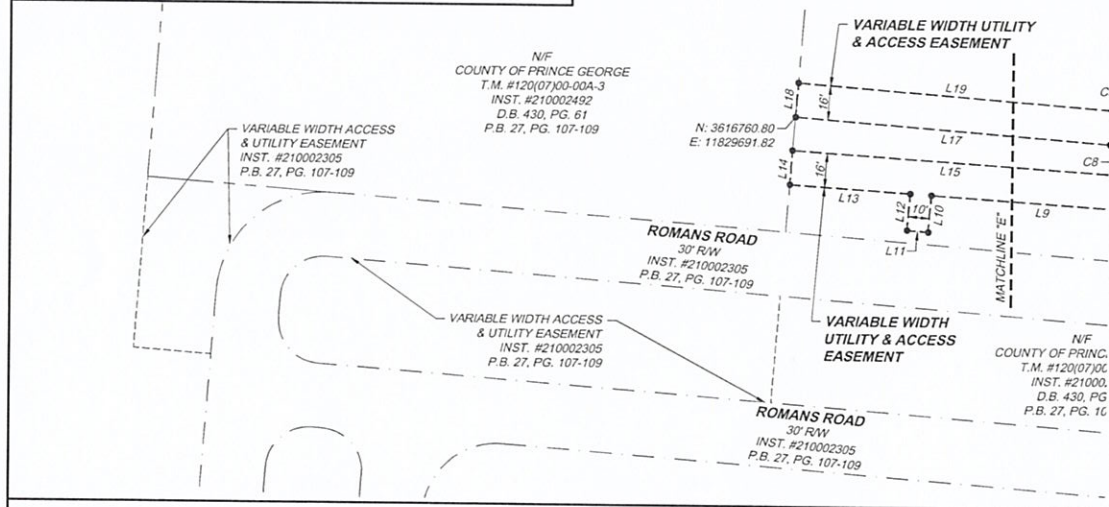
**TIMMONS GROUP**

Site Development Residential Infrastructure Technology  
 THIS DRAWING PREPARED AT THE  
**TRUSTEES OFFICE**  
 4701 Lakeside Way, Suite 200 | Prince Georges, VA 23175  
 TEL: 804-745-5500 | FAX: 804-745-1111 | www.timmons.com



VARIABLE WIDTH UTILITY & ACCESS EASEMENT

CURVE TABLE						
CURVE	RADIUS	LENGTH	TANGENT	DELTA	CHORD BEARING	CHORD
C1	50.00'	32.50'	16.85'	37°14'27"	N75°21'25"W	31.93'
C2	1172.56'	233.39'	117.08'	11°24'17"	N31°28'27"W	233.01'
C5	150.00'	1.45'	0.73'	0°33'16"	N44°07'32"W	1.45'
C6	32.00'	30.53'	16.54'	54°39'43"	N67°41'13"W	29.38'
C7	150.00'	23.94'	12.00'	9°08'43"	N87°43'36"W	23.92'
C8	29.00'	15.27'	7.82'	30°10'18"	S69°53'32"E	15.10'
C9	45.00'	23.70'	12.13'	30°10'18"	N69°53'32"E	23.42'
C10	623.04'	281.91'	143.41'	25°55'30"	N43°55'37"W	279.51'
C11	5412.42'	481.20'	240.76'	5°05'38"	N69°06'43"W	481.05'
C12	315.47'	273.81'	146.20'	49°43'48"	N50°14'06"W	265.30'
C13	299.82'	262.19'	140.14'	50°06'20"	S50°14'38"E	253.92'
C14	5396.42'	483.05'	241.68'	5°07'43"	S69°06'59"E	482.89'
C15	638.46'	290.71'	147.92'	26°05'19"	S44°02'37"E	288.21'
C16	48.00'	45.79'	24.81'	54°39'43"	S67°41'18"E	44.08'



VARIABLE WIDTH UTILITY EASEMENT

LINE TABLE			LINE TABLE			LINE TABLE		
LINE	BEARING	LENGTH	LINE	BEARING	LENGTH	LINE	BEARING	LENGTH
L1	S67°04'51"W	11.73'	L11	S55°01'39"W	10.00'	L20	N84°56'31"E	0.96'
L2	S55°48'29"E	5.46'	L12	N34°58'21"W	17.15'	L21	N53°15'15"W	33.55'
L4	N43°49'05"W	19.16'	L13	S54°04'29"W	56.93'	L22	N58°54'28"W	29.23'
L5	N40°21'25"W	71.74'	L14	N35°28'57"W	16.00'	L23	N45°11'12"W	44.00'
L6	S84°58'27"W	35.05'	L15	N54°06'22"E	179.20'	L24	N27°58'28"W	21.53'
L7	S45°44'15"E	26.90'	L16	S85°06'07"W	19.05'	L25	N52°04'26"W	63.79'
L8	N45°44'15"W	7.55'	L17	S54°48'23"W	148.09'	L27	S52°25'56"E	63.48'
L9	S54°07'08"W	104.89'	L18	N35°11'37"W	16.00'	L28	S27°58'28"E	22.58'
L10	S34°58'21"E	17.26'	L19	N54°48'23"E	148.09'	L29	S45°11'12"E	40.31'

VARIABLE WIDTH UTILITY EASEMENT

LINE TABLE		
LINE	BEARING	LENGTH
L30	S58°54'28"E	29.37'
L31	S53°15'15"E	41.98'
L32	S44°28'49"E	8.85'
L33	S82°36'32"E	35.34'
L34	N87°21'12"E	7.21'
L35	N50°25'14"E	13.63'
L36	S39°34'46"E	82.19'

PLAT SHOWING  
**TWO VARIABLE UTILITY & ACCESS EASEMENTS**  
 LOCATED ON THE NORTH SIDE OF  
**STATE ROUTE 646, MIDDLE ROAD**  
 BLAND DISTRICT  
 PRINCE GEORGE COUNTY, VIRGINIA



DATE: August 13, 2021	SCALE: 1"=40'
SHEET 2 OF 2	1.N.45407-903
DRAWN BY: J. Livingston	CHECK BY: W.M. Neulty

SUBDIVISION AGENT \_\_\_\_\_ DATE \_\_\_\_\_

THIS DRAWING IS THE PROPERTY OF TIMMONS GROUP, INC. ALL RIGHTS RESERVED. NO PART OF THIS DRAWING IS TO BE REPRODUCED OR TRANSMITTED IN ANY FORM OR BY ANY MEANS, ELECTRONIC OR MECHANICAL, WITHOUT THE WRITTEN PERMISSION OF TIMMONS GROUP, INC.

**TIMMONS GROUP**  
 Site Development Residential Infrastructure Technology